

**SOX8 Antibody (Center)**  
**Affinity Purified Rabbit Polyclonal Antibody (Pab)**  
**Catalog # AP16630c****Specification**

---

**SOX8 Antibody (Center) - Product Information**

Application	WB,E
Primary Accession	<a href="#">P57073</a>
Other Accession	<a href="#">NP_055402.2</a>
Reactivity	Human
Host	Rabbit
Clonality	Polyclonal
Isotype	Rabbit IgG
Calculated MW	47314
Antigen Region	225-253

**SOX8 Antibody (Center) - Additional Information****Gene ID** 30812**Other Names**

Transcription factor SOX-8, SOX8

**Target/Specificity**

This SOX8 antibody is generated from rabbits immunized with a KLH conjugated synthetic peptide between 225-253 amino acids from the Central region of human SOX8.

**Dilution**

WB~~1:1000

E~~Use at an assay dependent concentration.

**Format**

Purified polyclonal antibody supplied in PBS with 0.09% (W/V) sodium azide. This antibody is purified through a protein A column, followed by peptide affinity purification.

**Storage**

Maintain refrigerated at 2-8°C for up to 2 weeks. For long term storage store at -20°C in small aliquots to prevent freeze-thaw cycles.

**Precautions**

SOX8 Antibody (Center) is for research use only and not for use in diagnostic or therapeutic procedures.

**SOX8 Antibody (Center) - Protein Information****Name** SOX8 {ECO:0000303|Ref.1, ECO:0000312|HGNC:HGNC:11203}**Function** Transcription factor that may play a role in central nervous system, limb and facial

development. May be involved in male sex determination. Binds the consensus motif 5'-[AT][AT]CAA[AT]G-3' (By similarity).

#### Cellular Location

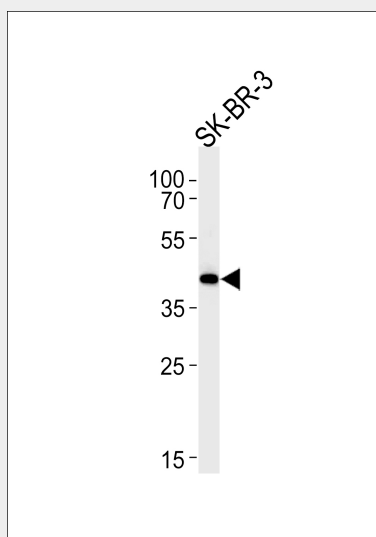
Nucleus {ECO:0000255|PROSITE-ProRule:PRU00267}.

### SOX8 Antibody (Center) - Protocols

Provided below are standard protocols that you may find useful for product applications.

- [Western Blot](#)
- [Blocking Peptides](#)
- [Dot Blot](#)
- [Immunohistochemistry](#)
- [Immunofluorescence](#)
- [Immunoprecipitation](#)
- [Flow Cytometry](#)
- [Cell Culture](#)

### SOX8 Antibody (Center) - Images



SOX8 Antibody (Center) (Cat.# AP16630c) western blot analysis in SK-BR-3 cell line lysates (35ug/lane). This demonstrates the SOX8 antibody detected the SOX8 protein (arrow).

### SOX8 Antibody (Center) - Background

This gene encodes a member of the SOX (SRY-related HMG-box) family of transcription factors involved in the regulation of embryonic development and in the determination of the cell fate. The encoded protein may act as a transcriptional activator after forming a protein complex with other proteins. This protein may be involved in brain development and function. Haploinsufficiency for this protein may contribute to the mental retardation found in haemoglobin H-related mental retardation (ART-16 syndrome).

### SOX8 Antibody (Center) - References

Nonaka, D. Am. J. Clin. Pathol. 131(5):731-736(2009)  
Hoff, S., et al. J. Comp. Neurol. 509(4):356-371(2008)  
Wissmuller, S., et al. Nucleic Acids Res. 34(6):1735-1744(2006)  
Schepers, G., et al. J. Biol. Chem. 278(30):28101-28108(2003)  
Gevaert, K., et al. Nat. Biotechnol. 21(5):566-569(2003)